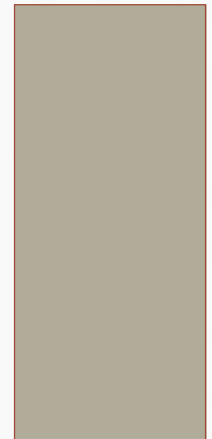
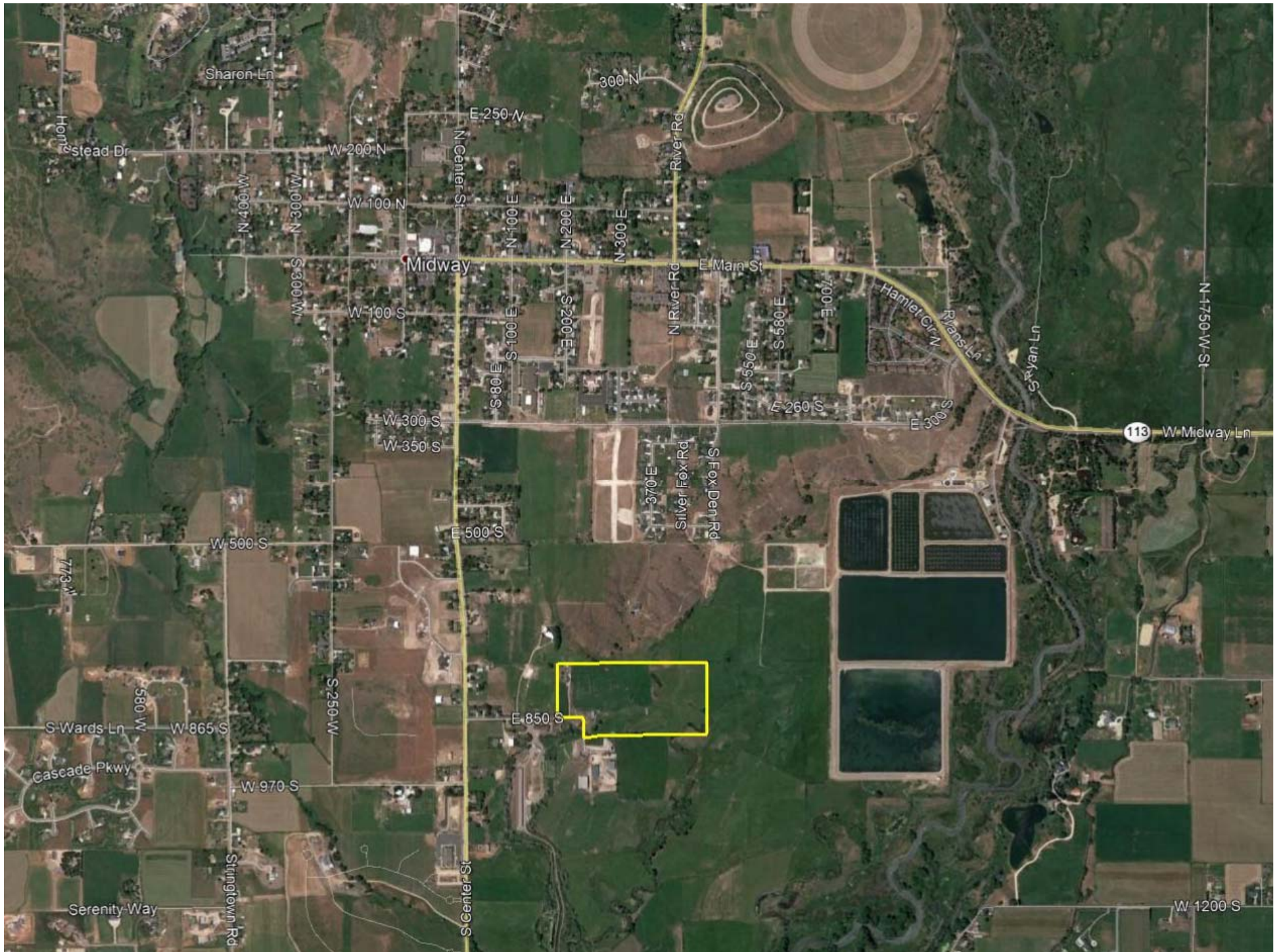


KEN PROBST
MEADOW HILL SUBDIVISION

WILL SERVE LETTER











FOUND BRASS CAP WASATCH COUNTY MONUMENT FOR THE WEST QUARTER CORNER OF SECTION 2, TOWNSHIP 4 SOUTH, RANGE 4 EAST, SALT LAKE BASE AND MERIDIAN.

PROBST NORTH FIELDS LLC SUBDIVISION		
SUBDIVISION CONCEPT		
ENGINEERING		
RESOURCE GROUP, P.C. 380 E Main St. Suite 204, Midvale, UT 84049 ph. (435) 657-9799		
DESIGN BY: PFB	DATE: 16 JAN 2011	SHEET
DRAWN BY: PFB	REV:	1