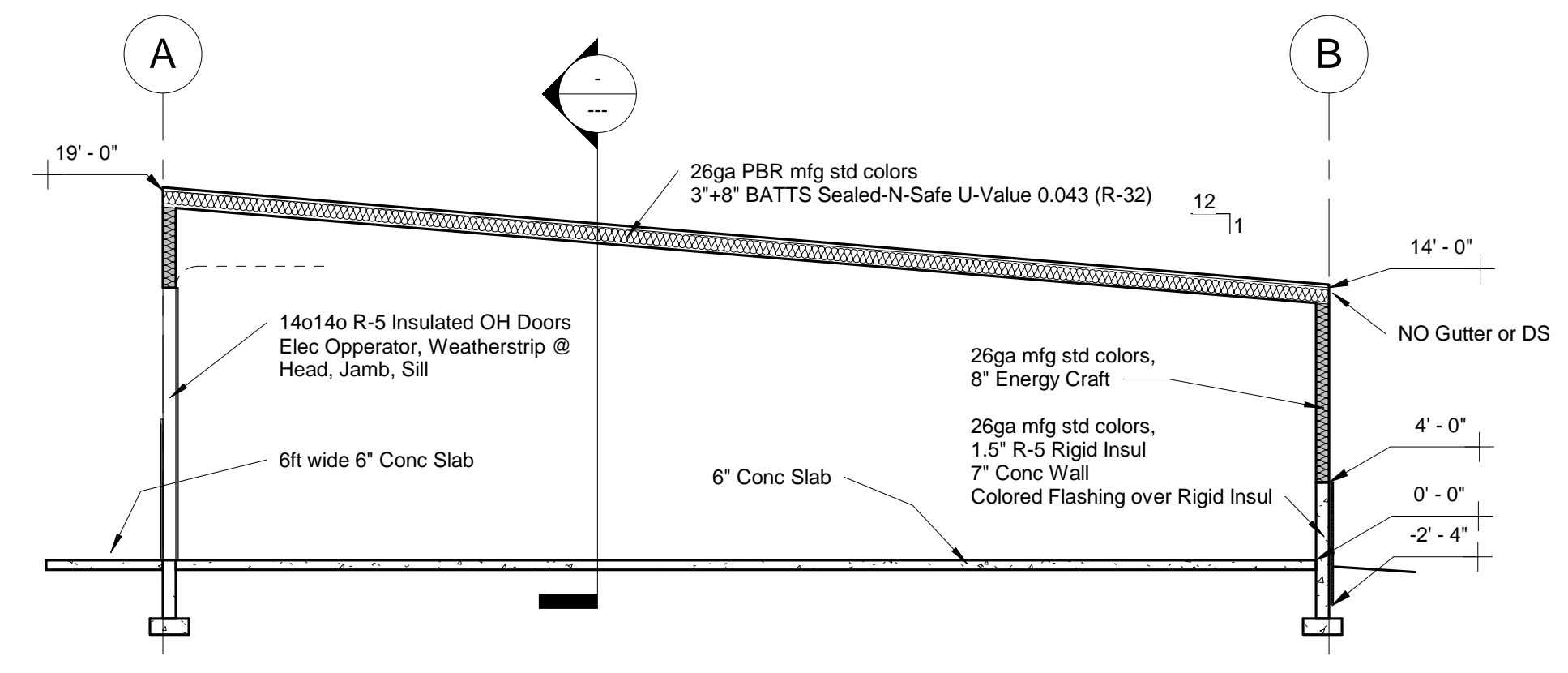
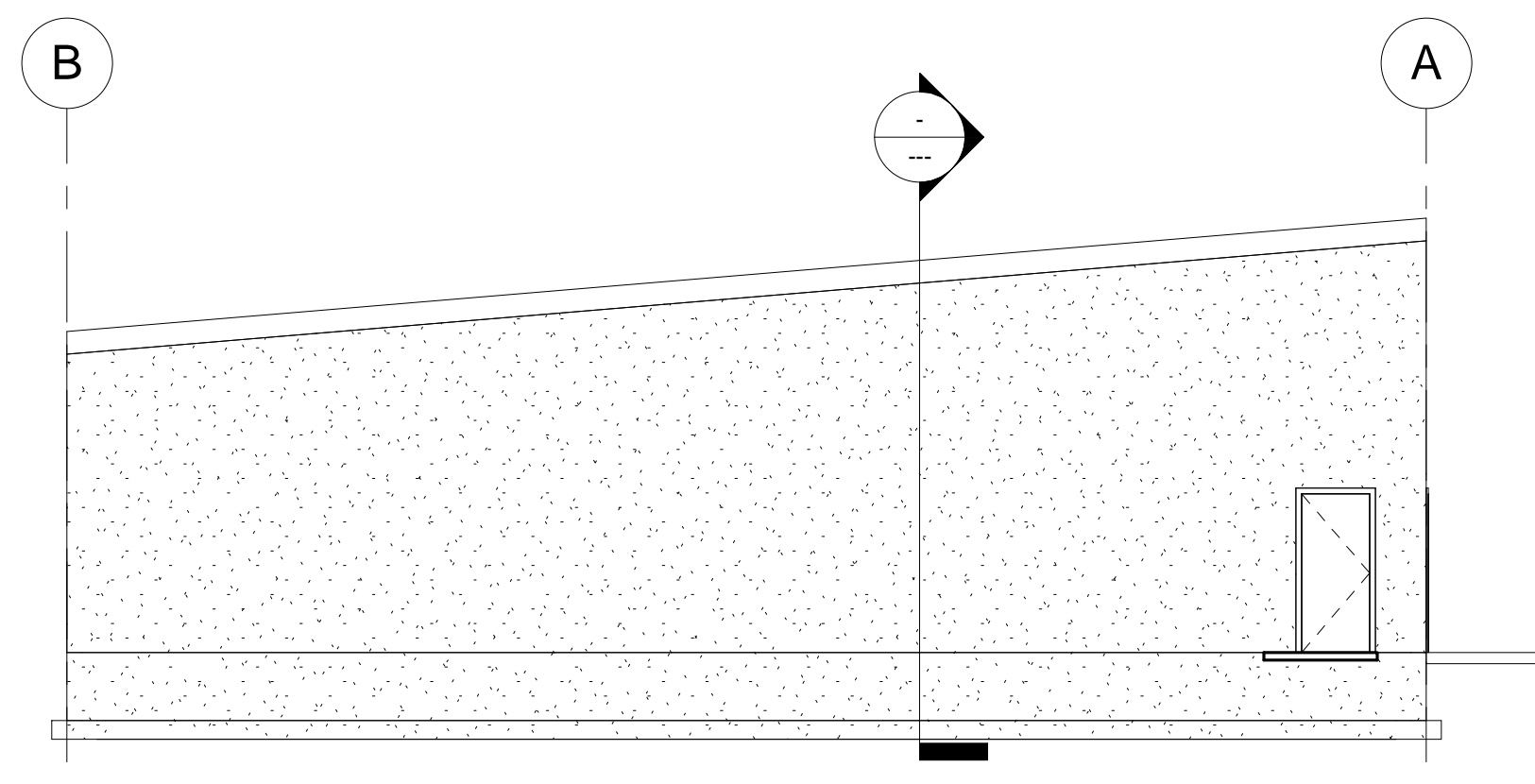


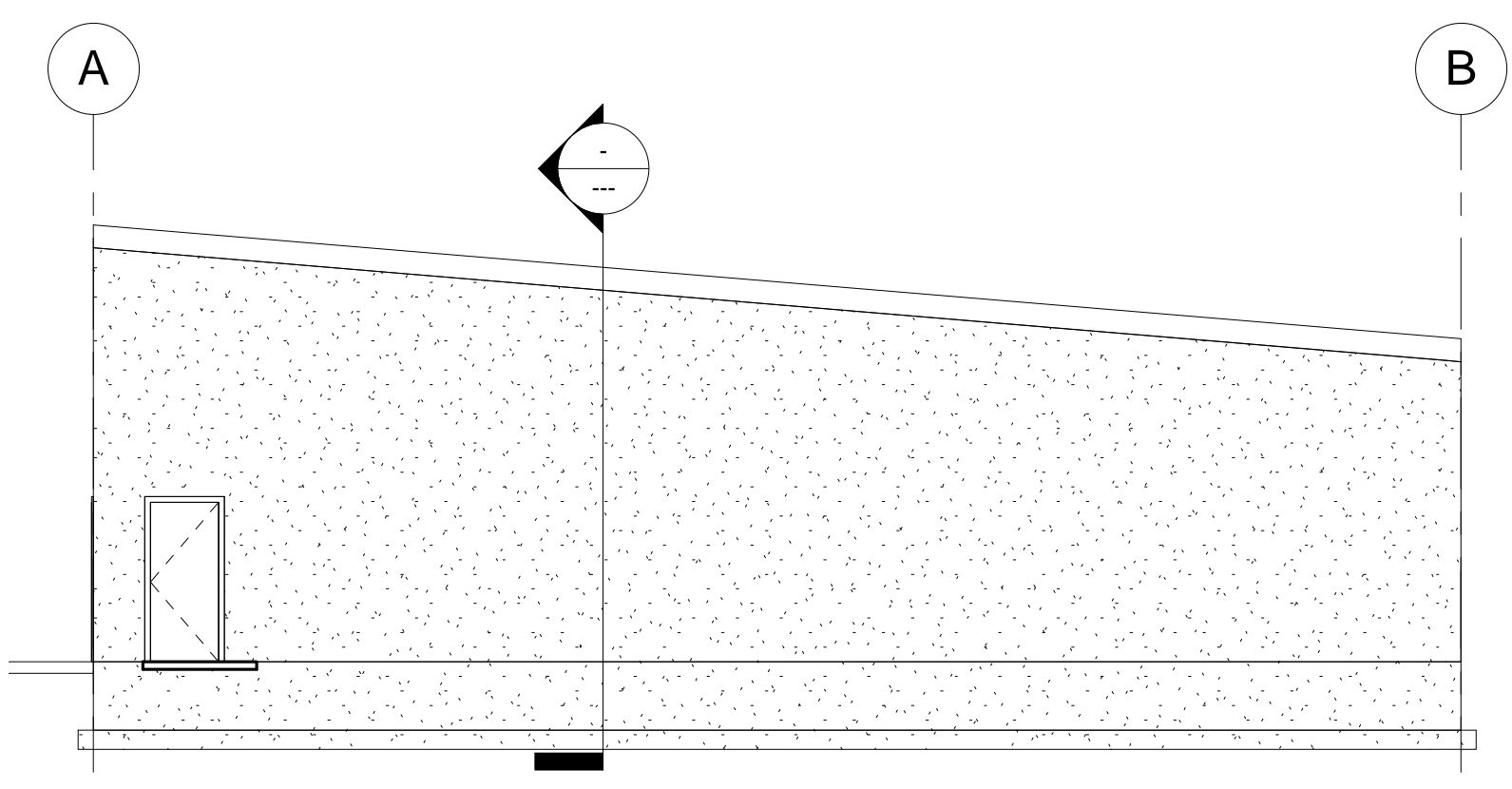
1 WEST ELEVATION
1/8" = 1'-0"



4 Section 5
1/8" = 1'-0"



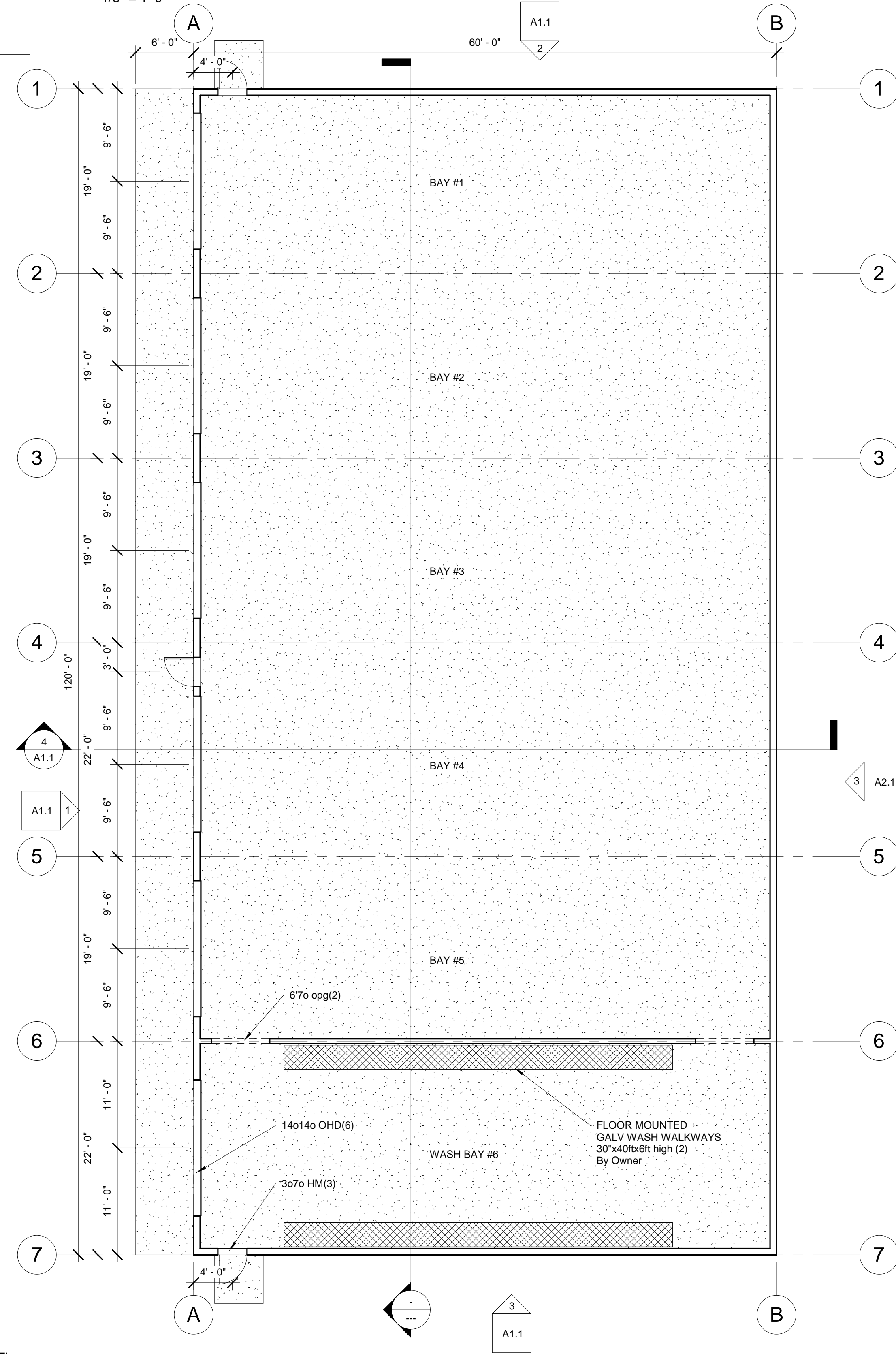
2 NORTH ELEVATION
1/8" = 1'-0"



3 SOUTH ELEVATION
1/8" = 1'-0"

- DESIGN REQUIREMENTS**
- IBC 2015 Risk Cat II
 - Live Load 20 psf
 - Ground Snow Load 126 psf
 - Roof Snow Load 88 psf
 - Wind Load 115 mph, Exposure E, Risk Category II
 - Seismic Site Class D, Seismic Acceleration S_s 77.6%
- BUILDING REQUIREMENTS**
- Roof: 26ga PBR, mfg color
 - Wall: 26ga PBR, mfg color
 - Over Head Doors (6 each) 140140 w/trim
 - Man Doors (3 each) 3070 w/trim
 - NO GUTTER or DOWN SPOUTS
 - Exhaust Vent Framed Openings (3 each 4040)
 - Roof Insulation: 3'-8" Batts Sealed-N-Safe U-Value 0.043
 - Wall Insulation: 8" Energy Craft
 - Full Height 26ga sheets along grid line 6, w/ (2) 6070 OPGS
 - Full Height 26ga sheets in Wash Bay

6 Design Requirements
1 1/2" = 1'-0"



5 Floor
1/8" = 1'-0"

| DATE | REVISION | BY |
|------|----------|----|
| | | |
| | | |
| | | |
| | | |
| | | |
| | | |
| | | |
| | | |
| | | |

George E Bennett
ARCHITECTURE
DEVELOPMENT
113 WEST, 200 SOUTH
HEBER CITY, UTAH 84032

(435) 657-1354
(435) 657-1355 cell
gbennett1354@gmail.com



FLOOR PLAN, SECTIONS, ELEV
MIDWAY Vehicle Building
Wasatch County

| | |
|-----------|-------------|
| DATE: | 15 Nov 2017 |
| DRAWN BY: | GB |
| PROJ. | 1705 |
| SHEET | A1.1 |
| OF | Preliminary |