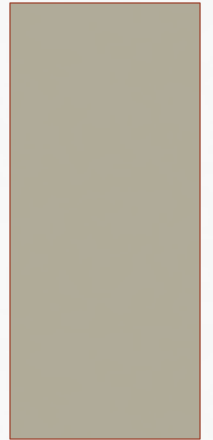


SWISS HAVEN PUD

RECORDING OF PLAT



BACKGROUND

- Originally Phases “C” and “D” of the Villages of Zermatt.
- Received final approval on 17 February 2000.
- Plat maps were never recorded, and the units were never built.
- At the time, Midway City did not have a deadline for recording.

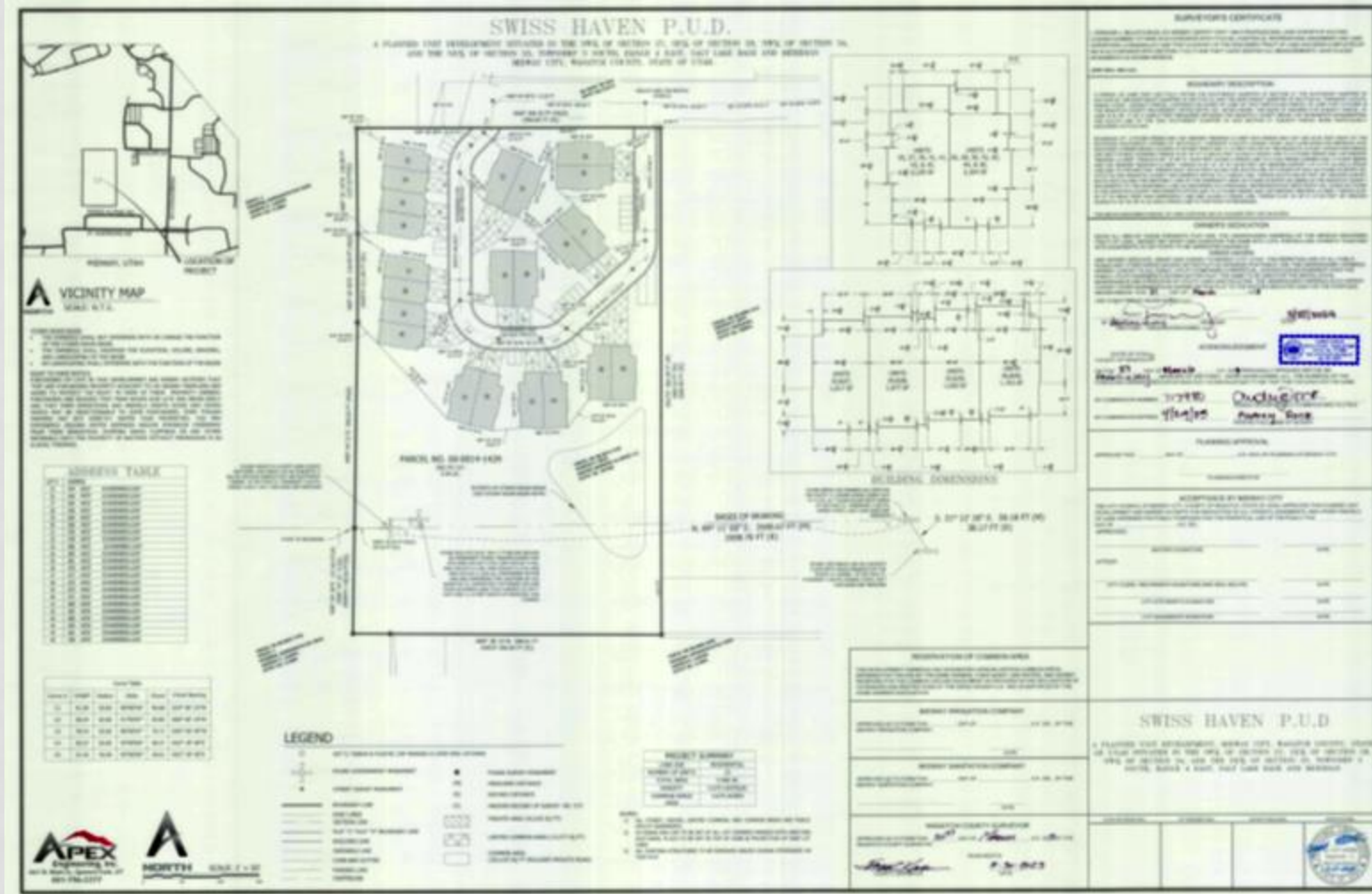
VILLAGES OF ZERMATT



BACKGROUND (CONT.)

- The name was changed to Swiss Haven and a development agreement was approved on 7 February 2023.

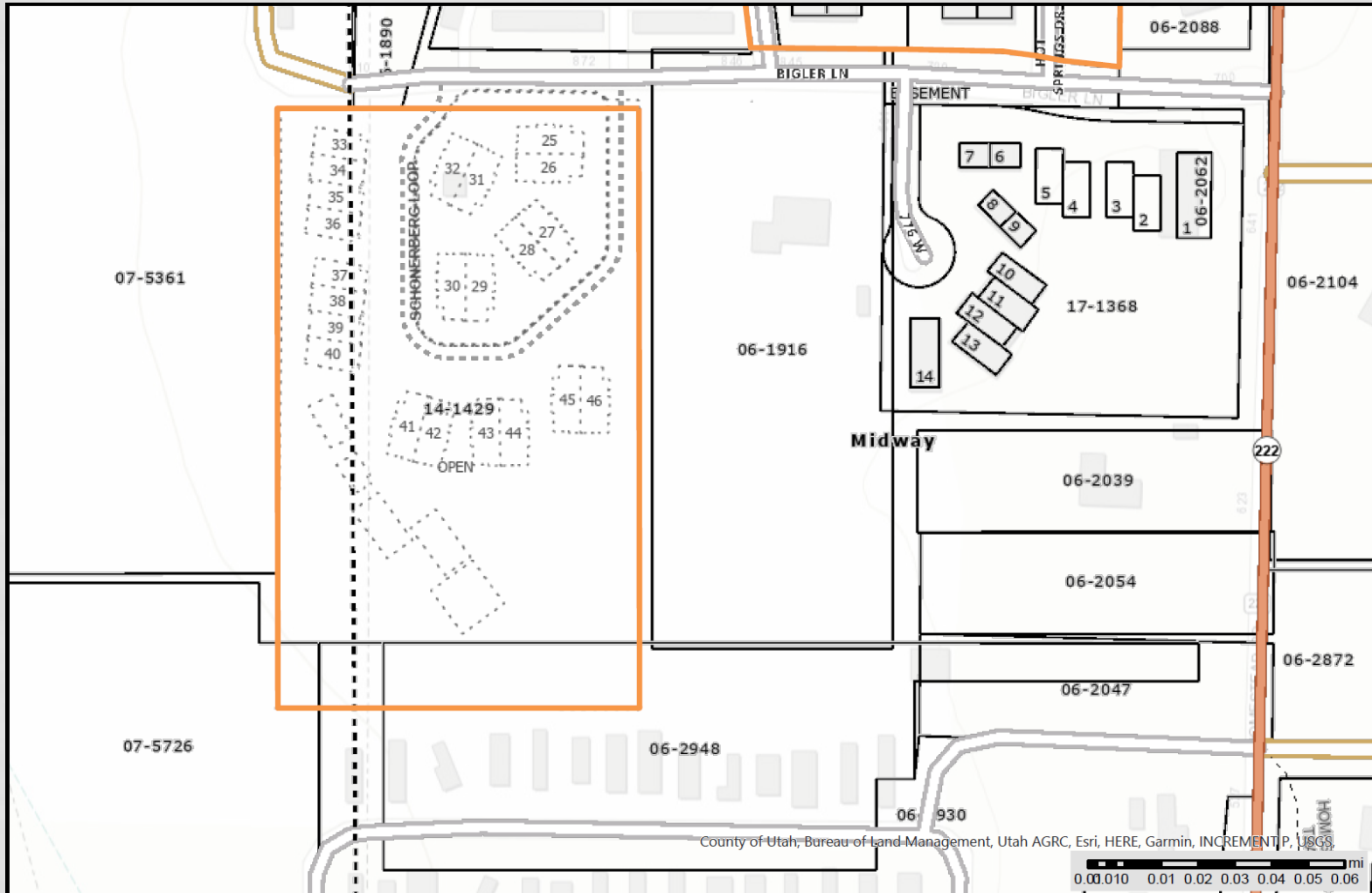
SWISS HAVEN



BACKGROUND (CONT.)

- Wasatch County Surveyor contacted the City and indicated that part of the property was in the County.

PROPERTY BOUNDARY



POSSIBLE SOLUTIONS

- Annex the property that is in the County then record the plat map for Swiss Haven.
 - Could take six months or more.
- Record the plat map once the annexation process has begun.
 - The County would allow if the annexation process was completed before the end of 2023 (Taxing, etc.).
 - Some units stratal the boundary.
 - Units could be sold once the plat map was recorded.
 - Risk of problems arising during the annexation process.
 - An agreement or MOU would be needed.

QUESTIONS?