

Midway City Council  
6 February 2024  
Regular Meeting

Donations



December 21, 2023

Dear Mayor Johnson,

We appreciate the opportunity to introduce you and the Midway City Council to Encircle Family and Youth Resource Center and our mission of serving LGBTQ+ youth and families throughout Utah.

**Encircle History:**

Encircle Family and Youth Resource Center has served Utah's LGBTQ+ youth (aged 12-25) and their families since 2017. According to The Trevor Project's 2023 study, 41% of LGBTQ+ youth have seriously considered attempting suicide in the past year, additionally, 56% of LGBTQ youth have reported they wanted counseling from a mental health professional but were unable to receive it in the last 12 months. Fewer than 40% of LGBTQ+ young people found their home to be LGBTQ+ affirming.

Encircle builds community resource centers in conservative communities across Utah, which provide life-affirming programming and co-located mental health therapy services to support and empower at-risk and vulnerable LGBTQ+ youth in safe, comforting, and nurturing environments. Encircle utilizes a neutral approach: No Sides, Only Love. This focus is emblematic of Encircle's mission--bringing families and communities together to enable LGBTQ+ youth to thrive. Encircle currently has homes operating in Salt Lake, Provo, St. George, and in June 2023 opened a fourth home in Heber, Utah.

**Beneficiary Population:**

Encircle Heber is the first LGBTQ+ affirming public space in Wasatch County, something the Wasatch High School GSA has been advocating for more support for several years. That group of students, their families, and other supporters are a key reason Encircle chose to expand to the Midway-Heber area. Financial support from Midway City will be utilized to support programming for youth in our Heber location, serving Wasatch School District and Wasatch High School, along with the rest of the surrounding community in Utah's rapidly growing "Wasatch Back." Additionally, we provide community education and awareness for businesses and educational institutions, outreach efforts in Wasatch and Summit counties, and

### **Encircle Impact:**

Our home staff strive to provide safe and affirming spaces for LGBTQ+ youth, young adults, and their families, as well as supportive educational materials and information for parents, schools, and community. We measure four outcomes for our home visitors: authenticity, social connection, positive emotional experience, and psychological and emotional skills.

- Target Outcome #1: Authenticity - Humans thrive when they are working toward self-defined, meaningful goals. In 2022, 99.17% reported positive authenticity through experiences at Encircle.
- Target Outcome #2: Social Connection - healthy social connections are consistently and positively associated with all indicators of psychological well-being. In 2022, 100% reported increased social connection through their experiences with Encircle.
- Target Outcome #3: Positive Emotional Experience - people who have positive emotions in their everyday lives tend to be happier, healthier, learn better, and get along well with others. In 2022, 100% reported positive emotional experiences through their experiences with Encircle.
- Target Outcome #4: Psychological and Emotional Skills - sharing emotions, countering negative thought patterns, and mindful acceptance of emotions all contribute to greater mental health and increased well-being. In 2022, 99.68% reported increased psychological emotional skills through their experiences with Encircle.

### **Encircle Programs:**

All Encircle homes have similar scheduled programming and initiatives, tailored where necessary for specific community needs. Each Encircle home is open for after school drop-in hours from 3:00 pm - 8:00 pm for youth and young adults and follows the same schedule for Friendship Circles. In addition to other LGBTQ+ affirming programming, each home hosts weekly parent groups, art nights, writing workshops, and music nights; monthly Rainbow Brunch, and speaker events. Additionally, each home has a number of dedicated mental health therapists trained specifically in supporting LGBTQ+ youth and young adults. Therapy sessions are affordable and can be billed to insurance. In 2023 Encircle launched the Encircle Therapy Assistance Grant, which provides 6 months of weekly therapy sessions at no cost to low-income, uninsured or under-insured clients thanks to donations specifically for this initiative.

### **Overview of Encircle Programming:**

- Therapy: We offer affirming, affordable therapy in which we never "push" a client in any direction. Rather, we allow our clients space to decide for themselves where they want their life to go in accordance with their values. Therapy sessions are offered in-person at our four locations, as well as virtual tele-health sessions for those unable to travel to an Encircle home due to disability, access to reliable transportation, or distance as for our rural and remote clients.
- Programs: Our programs are inspired by research, customized for connection, and designed for LGBTQ+ individuals, parents, families, and members of the community.

- Friendship Circles: Groups provide space for sharing, connection, and support through discussion of relevant issues that often explore living as an LGBTQ+ youth in a conservative culture.
- Parent Resource Groups: We have weekly lunchtime support groups specifically for parents of LGBTQ+ youth, our goal is to strengthen family ties, increase feelings of support and love within families with LGBTQ+ members, and to provide parents with access to other parents who may have similar questions, experiences, and needs. We currently average 28 weekly guests for our parent programming across all homes and since 2017 have had 8,695 total parent program attendees and 99% report finding support at Encircle.
- Educational Resources: We publish resources by print and digitally that help those we serve and the community better understand healthy relationships, gender, sexuality, and more.

### **Diversity, Equity, and Inclusion:**

Encircle provides a comprehensive Cultural Humility Training program tailored for a wide range of organizations, including companies, nonprofits, schools, healthcare workplaces, and more. This impactful training creates a safe and inclusive environment, offering valuable insights and an opportunity to explore and address questions surrounding the LGBTQ+ community. Our presentation incorporates the latest research, focusing on issues that profoundly impact the mental health and overall well-being of this community. Furthermore, we provide clarity on essential terms and offer best practices for fostering positive and respectful relationships in both professional and personal settings. In 2022 Encircle staff trained 1251 individuals through Cultural Humility Trainings, and YTD for 2023 is 887. We have presented this training to organizations such as Salt Lake County, Boys & Girls Club, Wasatch Behavioral Health, and Children's Justice Center, Amazon, Lendio, Northwestern Mutual, Adobe, Podium, Divvy. Additionally, we have delivered this DEI training to entities such as Brigham Young University, Utah Valley University, the University of Utah, Davis School District and Salt Lake School District.

We are eager to work with Midway City, we appreciate the consideration of a partnership and monetary donation. Together we can support the youth and families in Midway and strengthen the Wasatch County community.

Sincerely,



Jordan F. Sgro  
Executive Director  
Encircle Family and Youth Resource Center



# Christian Center of Park City

## ABOUT US

The Christian Center of Park City is a Christian, humanitarian community resource center that helps improve the lives of people and communities by meeting immediate and basic needs, serving as a leading networker of community resources, offering counseling and care support, and giving hope to those we serve.

Our mission is to meet people at their point of need as an expression of God's love. Through our ongoing and annual programs, we seek to provide resources and direct assistance with compassion, dignity, and hope. From food pantries to basic needs assistance to seasonal worker outreach and beyond, our programs provide clothing, food, holistic care, and more to people in need in Summit and Wasatch counties.

## PAST FUNDS

The Christian Center of Park City has received funds from Midway City Corporation in the past, which we used for our Basic Needs Assistance program during the COVID-19 pandemic. Our Basic Needs Assistance program focuses on assisting families and individuals who need food and clothing and may be facing financial hardship.



24 HOUR HELPLINE:  
(800) 647-9161  
P (435) 658-4739

Dear Mayor Johnson and Esteemed Members of the Midway City Council,

We earnestly seek your support, not just as a financial contribution but as a steadfast partner in championing the health and safety of our community through essential victim services at the Peace House community campus.

Founded in response to domestic violence incidents in Park City, Peace House has blossomed into a vital nonprofit hub, tirelessly serving Wasatch and Summit Counties. In Utah, where interpersonal violence affects 1 in 3 women—surpassing the national average—Midway City's support becomes a beacon of hope.

Our 42,000 sq. ft. community campus is a haven, providing immediate safety, shelter, nourishment, and comprehensive support services. In the last fiscal year, we embraced and empowered 88 women, 4 men, and 56 children in emergency shelter. Our dedicated case management team assisted 172 survivors, marking a collective effort toward creating a safer community.

The transformative impact of your support is tangible. A 100% transition rate to safe, permanent housing for those exiting our transitional housing program demonstrates the enduring influence we have collectively achieved over the last fiscal year. Specifically, the assistance provided to 12 Midway City residents—emergency shelter, housing, therapy, case management, housing navigation, and legal advocacy—speaks not just of financial investment but of lives saved and a profound, lasting impact on multiple generations.

Enclosed, please find detailed outcome reports from our previous award cycle, highlighting the far-reaching impact of your support. Additionally, there is an addendum summarizing Peace House services offered specifically to Midway City residents, underscoring the depth and breadth of our commitment to our community.

Together, our partnership transcends monetary contributions, fostering a community where families break the cycle of abuse, experience profound healing, and pave the way for future generations to thrive.

With gratitude,



Kendra Wyckoff  
Executive Director



To: Midway City Corporation  
Date: December 29, 2023  
From: Kendra Wyckoff, Executive Director  
RE: Transformative Impact -- Peace House Outcomes Report for

During the recent funding period, Peace House effectively utilized the \$5,000 allocation to support survivors in Midway City. Total services to Midway residents exceeded the \$5,000 award; however, the funding from the Midway City Council amplified our impact on these survivors' lives.

Throughout the 2023 fiscal year, we assisted 12 survivors of interpersonal violence who identified Midway City as their residence. The support provided included a total of 280 service hours, encompassing:

- 87 hours of Housing Navigation support (\$2,061.03)
- 73 hours of Legal Advocacy (\$2,365.93)
- 64 hours of Case Management (\$1,536.64)
- 6 hours of Clinical Therapy (\$163.88)

Among the survivors, one client received Transitional Housing, and two received Emergency Shelter services. Notably, our Emergency Shelter, with a capacity for 25 individuals per day, incurred a cost of \$79.99 per person, per day. Over the fiscal year, we served two Midway residents for an average of 30 days, totaling an estimated cost of \$4,799.40.

Additionally, our Transitional Housing program, boasting a 90% success rate since its 2020 inception in transitioning survivors to self-sustaining, permanent housing, operates for \$67.11 per day. With 12 units and a flexible housing duration ranging from 6 to 24 months, Peace House supported one Midway City resident through this program in the last fiscal year.

In conclusion, our collaborative efforts with the Midway City Council play a pivotal role in saving lives and fostering profound positive outcomes for survivors, and for the aforementioned clients. The unwavering support received, both in the form of funding and ongoing commitment, amplifies the impact of Peace House in the community. Together, we make a meaningful difference in the lives of survivors of interpersonal violence, offering them the support they need to rebuild and thrive. The Midway City Council's continued support ensures that our services maintain a high standard of quality, enabling us to provide comprehensive care that makes a lasting impact. We are grateful for this partnership and look forward to continuing our shared mission of creating a safer and more supportive environment for all.



**Peace House is dedicated to ending interpersonal violence and abuse and empowering survivors to heal and thrive by providing support services, safe housing, and prevention education.**



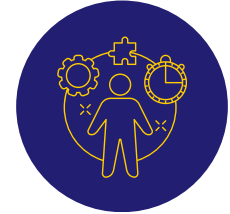
### **Clinical Therapy**

Utilizing proven trauma treatments to help survivors and their families overcome post-traumatic stress symptoms and rebuild stability.



### **Legal Advocacy**

Offering extensive legal assistance, the Legal Advocate team represents clients, educates on victims' rights, and guides them through the criminal justice process.



### **Case Management**

Skillfully applying evidence-based interventions, case managers guide survivors through healthcare, social services, and workforce re-entry, providing intervention and safety planning.



### **Safe Housing**

Advocates ensure safe housing through a 24/7 helpline and the evidence-based Lethality Assessment Protocol, collaborating for comprehensive care.



### **Emergency Shelter**

In the last fiscal year, Peace House responded to 1,247 calls on the 24/7 helpline, providing safe shelter for 151 individuals over 4,452 nights.



### **Transitional Housing**

Since 2020, boasting a 90% success rate, this program connects survivors to long-term housing, achieving a remarkable 100% success rate last year.



### **Housing Navigation**

Engaging landlords and providing rental assistance, this team supports survivors in navigating housing, contributing to the success of the Transitional Housing program.

### **Prevention & Education**

Working to reduce interpersonal violence, this team intervenes with school-aged children, engages hospitality workers, and raises awareness across the community.



### **Sexual Assault Services**

Founded in 2019, Peace House promptly responds to survivors of sexual violence arriving at Park City Hospital. Our immediate support is followed by ongoing care, offering survivors a continuum of compassionate assistance, resources, and empowerment as they navigate the path to healing.



## Brad Wilson

---

**From:** Mairi Leining <Mairi@phcpc.org>  
**Sent:** Monday, December 11, 2023 11:07 AM  
**To:** Camille Palmer  
**Cc:** Nina Chartrand; Jenn Marley  
**Subject:** The People's Health Clinic: consideration for 2024 funding

CAUTION: This email originated from outside of the organization. Do not reply, click links or open attachments unless you recognize the sender's email address and know the content is safe.

Dear Camille and the Midway City Corporation,

The People's Health Clinic would love to be considered for 2024 funding. For 24 years, we have provided the uninsured residents of Wasatch and Summit Counties with no-cost, high-quality health care. As a private, nonprofit clinic, we serve as an essential safety net in the Wasatch back. Most of our patients live below the Federal Poverty Level and work at least one full-time job, but do not qualify for government assistance. Without the People's Health Clinic, our most vulnerable community members would lack access to primary and subspecialty medical services. Of note, 38% of our 3000+ patients are residents of Wasatch County and many call Midway home.

The People's Health Clinic began as a mobile van in 1999 when a group of concerned citizens wanted to address health disparities in the Wasatch Back. Since 2009, we have shared a wing of the Summit County Health Department building, and each year we expand our services and volume. I am the current CEO of the People's Health Clinic and previously served as the Medical Director. In 2019, I joined the People's Health Clinic as a volunteer internal medicine physician. After working as a hospitalist at the Park City Hospital, I wanted to prevent our uninsured population from ending up in the ICU. With humility, I have learned about the depth of poverty in Wasatch and Summit Counties through the stories of our patients. We have community members who have sought asylum from all over the world including Venezuela, the Northern Triangle, and Ukraine. They have survived terrifying journeys across multiple borders to escape extreme violence. It is our privilege to provide health care to these community members who need help the very most.

As a comprehensive community clinic, we work to address multiple health care issues in our community. We have award-winning and nationally recognized programs in Diabetes and Hypertension management. In April, the People's Health Clinic published our first academic article in an international journal that describes the successful outcomes of our Diabetes Program. (<https://doi.org/10.1007/s00592-023-02084-1> ). Over the past year, we have implemented a Women's Health Program led by an OB/GYN that includes family planning education, free same-day contraception, prenatal and postnatal care, cervical cancer screening and diagnosis, breast cancer screening, and the management of other gynecologic issues. In March we started a full-time mental health program that includes diagnosis, medical management, and counseling for all ages. We also have a latent tuberculosis screening and treatment program and presented an abstract on this work at a national tuberculosis conference in June.

Funding is our Clinic's biggest barrier as we develop our current programs to their full potential. Here are two programs with specific needs:

1. Women's Health Program: at this time, we can only afford our OB/GYN (who already works at a significantly reduced salary given her credentials) for 15 hours per week. 70% of our patients are women, most of whom are in their reproductive years. Ideally, we would love to fund additional OB/GYN hours so we can keep up with patient demand.
2. Community Health Worker (CHW): we need a second, full-time community health worker. We have one full-time, and it is clear how incredibly effective her culturally sensitive services are for our Spanish-speaking patients.

Please let me know if you have any questions. The People's Health Clinic would be honored to give Midway City officials a tour of the clinic if given the opportunity.

With much gratitude for your consideration,

Mairi

**MAIRI G. LEINING, MD, MPH, FACP**

*pronouns: she/her*

Chief Executive Officer

The People's Health Clinic | Park City, Utah

Cell: (435)-659-7835 | Email: [Mairi@phcpc.org](mailto:Mairi@phcpc.org)

[www.peopleshealthclinic.org](http://www.peopleshealthclinic.org)

501c3 | TAX ID: 87-0638042



**\*\*THIS ELECTRONIC MESSAGE, INCLUDING ANY ACCOMPANYING DOCUMENTS, IS CONFIDENTIAL and may contain information that is privileged and exempt from disclosure under applicable law. If you are neither the intended recipient nor responsible for delivering the message to the intended recipient, please note that any dissemination, distribution, copying or the taking of any action in reliance upon the message is strictly prohibited. If you have received this communication in error, please notify the sender immediately. Thank you.**

December 1, 2023

Mayor Celeste Johnson  
Midway City  
75 North 100 West  
Midway, UT 84049

Dear Mayor Johnson,

I am turning to you today on behalf of the Wasatch CAPS Scholarship Fund. This fund, which began in 2020, has provided \$171,000 to 111 qualified CAPS students for post graduate education.

Wasatch CAPS (**C**enter for **A**dvanced **P**rofessional **S**tudies) is an experiential learning program for junior and senior high school students to work on real-world projects with local professionals.

Over the past year several of our CAPS students worked on the following Midway City projects: Midway Must Haves Souvenir Shoppe, Community Center Architecture, Speeding Campaign and Town Square Redesign. We value our relationship and are so grateful for your support!

CAPS students qualify for a scholarship by completing a real-world project, finishing all 4 professional skill modules, serving 4 volunteer ambassador hours, and interviewing with our CAPS Scholarship committee.


As you know, the cost of tuition is rising. These increasing costs can deter students from pursuing a college degree or further training. With the pandemic disease and its economic effect, we are seeking to provide financial support to affected students.

All donations will go through the Wasatch Education Foundation, which is a 501(c)(3). You can donate, either by check or online through our website ([www.wasatched.org](http://www.wasatched.org)). When writing a check make it out to the Wasatch Education Foundation, with CAPS Scholarship as the memo.

All donor scholarships over \$1000 will be individually recognized at a televised ceremony during graduation week.

Thank you!  
Weston Broadbent  
Director of Wasatch CAPS



WASATCH  COMMUNITY  
FOUNDATION

Midway City

FROM THE COMMUNITY.

FOR THE COMMUNITY.

# OUR MISSION

Our mission is to advance the well-being of Wasatch County residents by uniting community resources and programs through the following pillars:



# HOW DOES WCF SERVE THE COMMUNITY?

All Volunteer Board – currently 16 members  
Lawyers, Business Leaders, Hospital Administrator, Healthcare Providers and more



Over 50 Volunteers in our Pillar Committees  
Health, Education, Recreation, Arts, Human Services



We manage dozens of projects to support residents in the valley.



Benefiting the entire community... not just the underserves.

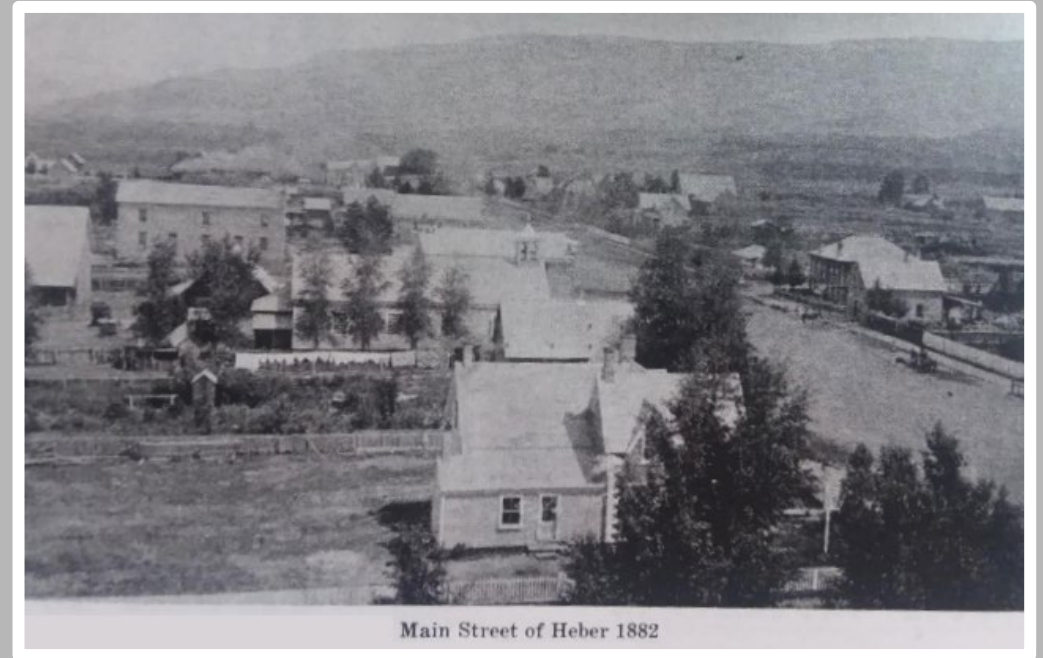
# WCF Recognized by the Heber Valley Chamber of Commerce

- **Community Impact**
- **Collaboration**
- **Community Engagement**
- **Long Term Commitment**
- **Positive Public Image**

The Wasatch Community Foundation has made a significant impact by connecting those in need with those who can help, partnering with organizations to improve the well-being of Wasatch County residents. With extensive community engagement, the foundation has shown a long-term commitment to addressing evolving needs. This award recognizes their invaluable contributions to the Heber Valley community.

# OUR HISTORY OF SERVING

- Established in **2000**
- Successes Including:
  - UVU to the Valley
  - Wasatch County Rec Center
  - Intermountain Hospital Dialysis Center
  - College Scholarship Program
  - Covid-19 Economic Relief





# Souper Bowl of Caring has

A big Thank-You again for the Wasatch Back residents who generously supported the Souper Bowl of Caring, sponsored by your Wasatch Community Foundation (WCF). This event was held at Walmart, Lees and Smiths from January 29th thru Feb. 1st. We received 3,015 food items which equals 1,681 pounds of food. These items will be distributed to the Wasatch High food pantry, Heber Center Stage food pantry



and the Community Action food pantry. We also received cash donations totaling \$1192.70. This will be distributed to the Salvation Army and the Wasatch Community Foundation for housing assistance. Our amazing youth, groups, school and community partners made this a fun and successful event in our efforts to tackle poverty and homelessness. This year, the

## Successful Year

Souper Bowl of Caring, nationwide saw 4,291 groups collect \$9,838,864 in cash and food items with 100% given to charities in their area. For more information about the Souper Bowl of Caring, go to [souperbowl.org](http://souperbowl.org). For information about how you can support or become involved with the Wasatch Community Foundation, go to our [wcf.org](http://wcf.org).



WASATCH COMMUNITY FOUNDATION PRESENTS

# CORNHOLE TOURNAMENT

July 4th @ 10 AM  
 MAIN STREET PARK  
 200 S MAIN ST., HEBER CITY  
 \$50/ TEAM

SCAN QR CODE TO REGISTER

# THANKSGIVING MEALS

Everything you need to make a delicious Thanksgiving meal with your family! Pick up meal boxes at the Heber Valley Food Pantry.

Thursday, November 19, 11am- 4pm  
55 East Center Street, Heber City  
For more information call 435- 657- 3260



# SUPER HEALTH kids

AUGUST 9 1-6pm

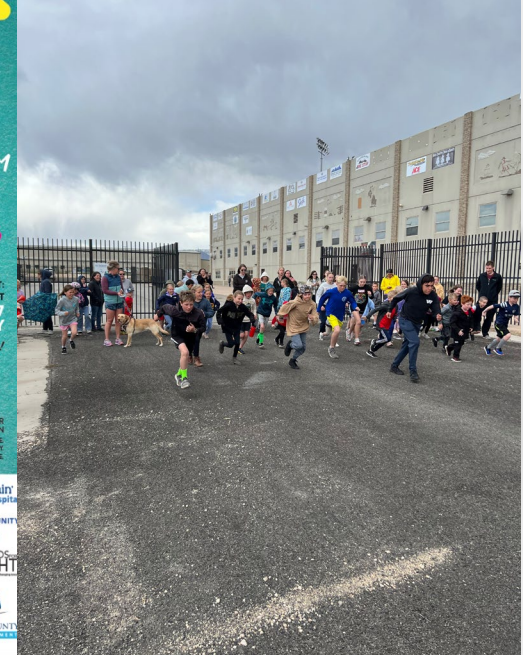
AT THE WASATCH COUNTY HEALTH DEPARTMENT

FREE WELL-CHILD EXAMS FREE HEARING EXAM  
 FREE IMMUNIZATIONS  
 FREE VISION EXAMS FREE DENTAL EXAMS

PLEASE REGISTER AT:  
 WASATCH COUNTY HEALTH DEPARTMENT  
 435-657-3307  
 55 S 500 E, HEBER CITY  
 SE HABLE ESPANOL!

DETAILS FOR PARTICIPATION: CHILDREN 4-8th GRADE FOR IMMUNIZATIONS ONLY REGISTER IN ADVANCE

Intermountain Heber Valley Hospital  
 WASATCH COMMUNITY FOUNDATION  
 20th Anniversary  
 FRIENDS OF SIGHT  
 WASATCH COUNTY



# HEALTH

Jonelle Fitzgerald



Wasatch County is recognized as one of the **“Most Healthy Communities”** in the USA

---

# Human Services

Diann Glenn



Help resolve the unmet needs of Wasatch County Areas of Focus - hunger, emergency shelter, affordable housing and public transportation.

---

# Recreation

Tim Ricks



Create a **“Happy, Fun and Energetic Community”** where residents are active and can live, learn, and play!

---

# Education

Kevin Stocking



Heber Valley’s # 1 Product – **“The Finest Youth on the Planet”**

---

# Arts

Dena Merrill



Make the Heber Valley **“A destination for arts enthusiasts everywhere”!**

# A few of our 2023 Major Programs

Health Pillar - Thanksgiving Dinner, Children's Health Clinic, Healthy School Awards, Dinner in the Park

Human Services – Food Assistance support to the 3 local Food Pantries, Christmas Food 'Bags' (Over 1600 served)

Recreation - Pickleball Courts, Fitness Court, July 4<sup>th</sup> Cornhole Tournament, Support for Soldier Hollow Night Races, Intermountain Adaptive Triathlon, Youth Flag Football and Little League Baseball, support to Wasatch State Park

Education- Support to the CAPS Program, Wasatch School West Campus student food pantries and breakfast program.

Arts – HVA Lighting Upgrades Rocky Mountain Care Art and Gardening classes

# The City of Midway

The WCF received a \$5000 donation by Midway City in October of 2022.

The monies were deposited in the General Fund and used across many of our programs benefiting residents across the Valley, including Midway City.

# 2024 New Planned Initiatives - in addition to ongoing programs

Health Pillar - Spanish Speaking Mental Health Therapist, Senior fall Prevention, Diabetes Support

Human Services – In addition to our Food Programs, Focus on Self Reliance and ‘Code Blue’

Recreation - Financial Support for WHS Mountain Bike Team, Soldier Hollow Night Races, Soldier Hollow Classic Sheepdog Competition, Mountain Bike Terrain Park, continued support to Wasatch State Park

Education- West Campus student services and out-reach to homeless students, adult education initiatives, special needs student support through Peake Education and Utah Valley University - Heber Campus

Arts - Youth theater scholarships, free art instruction classes for senior care center, partnership with our local theater companies (TVT, High Valley Arts)

**Thank You for your Continued  
Support!**